



A SEAT AT THE TABLE

Join us for an *Unforgettable Evening*
of Celebration and Advocacy.

12.7.24

SPONSORSHIP DECK

Be a *Catalyst* for Change.

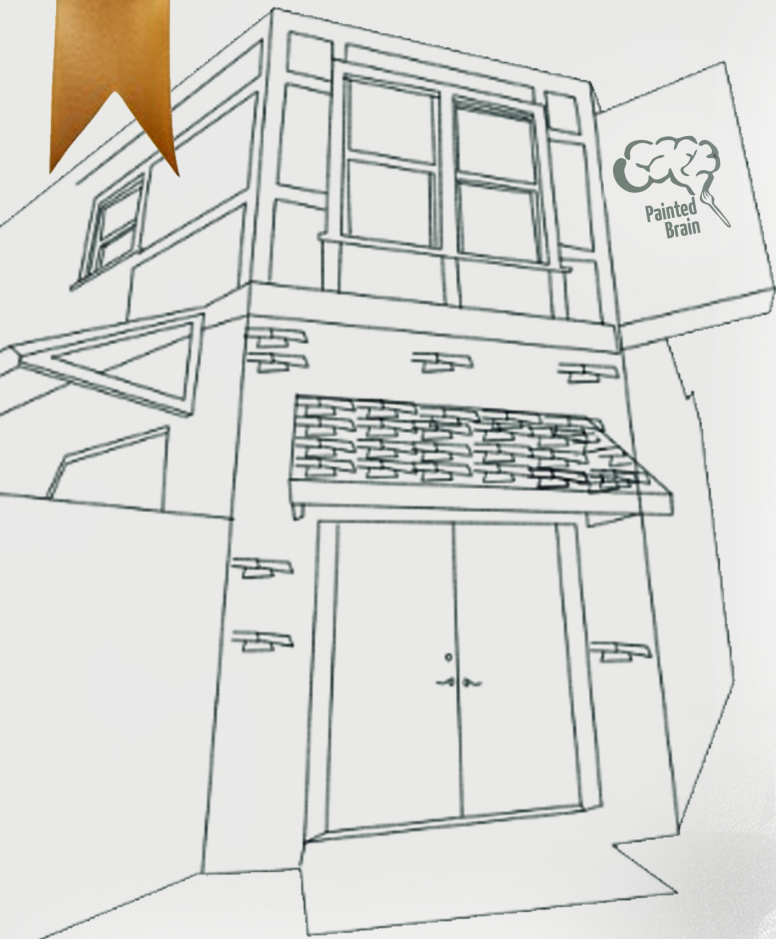
www.paintedbrain.org



GRAND

Our New
Community
Center

Opening



Painted Brain is excited to host A Seat at the Table - a grand opening fundraiser on December 7, 2024 benefitting our new Community Mental Health Center.

We respectfully request your organization's support of this significant milestone as an event sponsor or donor. Join us for an unforgettable evening with dinner, entertainment, and community as we raise funds to continue providing mental health treatment and recovery services to more underserved community members!

The Center: Painted Brain recently relocated to a larger space in the Westlake/Koreatown neighborhoods of Los Angeles to offer a greater array of services to underserved community members and to launch our new

community mental health center. The Center is a public space for outpatient mental health treatment services, Medi-Cal CalAIM Enhanced Care Management & Community Health Worker Services, arts programming, workforce development training and many other supportive services. We look forward to building out our vision together with our organizational partners, funders and community members.



Creating lasting, community-based solutions to mental health challenges and the impact of social injustice through arts, advocacy, and enterprise.

Painted Brain's history began in 2005 built on the Peer-to-Peer Model and working as a grass roots art group at a mental health center in Los Angeles producing poetry, paintings, cartoons and drawings developed into The Painted Brain magazine. In the early 2010s, we evolved into a community based organization under the leadership of Co-Founders Dave Leon, Rayshell Chambers, and David "Eli" Israelian. In 2016, Painted Brain was incorporated as a 501(c)(3) nonprofit and provided group activities, mental health services, resources and linkages to community members across California. Painted Brain has always met people wherever they are in their lives and advocated for equity in behavioral healthcare services leading by example with our community of licensed and unlicensed professionals.

COMMUNITY *Mental Health* FOR ALL

Creating Lasting Community Based Solutions
to Mental Health Challenges and the Impact

ABOUT US



**RAYSHELL
CHAMBERS**
Executive Director



NYLA CHRISTIAN
Board Member



DAVE LEON
Board Member



GARY SHENK
Board President



ELYN SAKS
Board Treasurer

Our Programs & Services: Since PB's inception, we have provided services to people impacted by behavioral health challenges, social injustice, and the carceral systems. Our programs serve upwards of 1000 individuals annually with mental health care, workforce development, Peer-to-Peer support, community center wellness, therapeutic arts and social enterprise. Our Care Team includes peer support specialists, occupational therapists, and social workers who serve 200 high-risk individuals annually.

We are a trusted community hub for low-barrier access to resources supporting basic human needs and connections to the community, which lessens the burden on the medical and justice systems and promotes overall well-being, self-sufficiency, and reintegration into society.

Our Peer Model: PB defines a peer as an individual self-identified as having lived experience who is in the recovery process and trained to help others experiencing similar situations. Painted Brain employs an array of Peer Support Specialists with vast lived experience, including those who have been certified by a county peer support specialist certification program. We create effective low-barrier jobs by understanding the market and the needs of the people we hope to employ through training and state advocacy for increased workforce opportunities across the state of CA.

Our Leadership: PB is a majority BIPOC women-led organization that intentionally employs people with lived mental health and substance use recovery experience at every level on our team.

OUR IMPACT

With limited donations and local funding resources, Painted Brain has made a positive impact serving some of the most vulnerable community members throughout Los Angeles and the state.

In 2023, Painted Brain served over 1000 unique participants

768

individuals engaged
in Peer Services

767

individuals engaged
in Digital Health
Literacy

108

individuals engaged
in Diversity, Equity,
and Inclusion
Training

95

individuals engaged
in Mental Health
Services

70

individuals engaged
in Life Skills
Development

TESTIMONIALS

"This training program was some of the highest quality I have ever seen in any peer training or behavioral health training program. This training program was on par with a graduate program in MH or Psychology or a very high quality MFT or even PHD program. That is how complete and comprehensive this training."

TESTIMONIALS CONT

“The art education aspect of the program is fantastic. I learned things about art creation and curation that inspired me. Kevin Adrian and Alfred worked with the rest of the team to take care of the cohort and get us prepared for the group show. I was informed and confident by the time the show came, and I was proud of my work and its message.”

“I got a job offer (Peer Navigator) earlier this week with a large hospital institution. As you know, we peers need so much support, especially in the job search arena. I don't think I could have done it without each of you in my life. I love that my new job involves going out in a medically equipped van to serve our city's unhoused populations. My new co-workers are highly experienced, wonderful neurodivergent, kind, and quirky folk. Thank you so much for all your support, I really appreciate everything you did!”

“One of the most valuable aspects of The Painted Brain is how it does not work within a hierarchy. Everyone there treats each other with respect, and participation is voluntary, so it is low-pressure. The Peers are skilled and certified in mental health support, and it is obvious in the way that the center is operated.”





YOUR *Commitment*

SPONSORSHIP & SEATING

Are you ready to commit to building community mental health for all? Painted Brain provides accessible and diverse programming to our community members with the majority of services being at no cost.

Our Community Center is not just a space - it's a home for all things where the therapeutic power of creativity meets the diverse tapestry of our emotions, super powers and our journey to recovery and wellness.

Sponsorship Levels - Our Gratitude

\$2,500 *Creator*

Donors at this level will receive a special acknowledgement on social media, and a custom thank-you gift

4 guest seats + 1 drink ticket/guest; special acknowledgement on social media, and a thank-you gift

\$5,000 *Builder*

Donors at this level will receive a special acknowledgement on social media, a custom thank-you gift, name on their table, and recognition on our online event page

1 Table for 8 guests + 1 drink ticket/guest; all items at the Creator Level plus name on the table, and recognition on our event website

\$7,500 *Architect*

Donors at this level will receive a special acknowledgement on social media, a custom thank-you gift, name on their table, and recognition on our online event page and on the event step & repeat

1 Table for 8 guests + 2 drink tickets/guest; all items at the Builder Level plus recognition on the event step & repeat

\$10,000 *Legacy*

Donors at this level will receive naming rights for a legacy program/room, a special acknowledgement on social media, a custom thank-you gift, name on their table, and recognition on our online event page, on the event step & repeat and on the podium

1 Table for 8 guests + 3 drink tickets/guest + VIP Parking; all items at the Architect Level plus naming rights for a legacy program/room, and recognition on the event podium



REMITTANCE FORM A SEAT AT THE TABLE

I/We wish to be a 2024 A Seat at the Table Fundraiser Sponsor at the _____ level.

I/We cannot commit to a sponsorship but wish to contribute \$ _____ to Painted Brain Community Center Programs.

Signed _____ Print Name _____

Company Name _____ Phone _____

Email _____

For any questions about sponsorship opportunities or in-kind donations please reach out to Bettina Elstro at bettina.elstro@paintedbrain.org.



Purchase
Individual
& Sponsorship
Levels